

CANCER SERVICES RESOURCES REFERRAL MANUAL



Original By: Joy K, Ogawa (Summer 2013)
Revised By: Sheri Sagayaga (Summer 2014)
Current Revision by: Penina McMoore (Summer 2015)
Chaminade University of Honolulu

Editor: Ronnie Mulford, Ph.D.

Table of Contents

| | |
|---|----|
| Air Transportation..... | 3 |
| Alternative Cancer Treatments..... | 3 |
| Assistance | |
| Food..... | 4 |
| General Services..... | 5 |
| Medical | 7 |
| Utilities..... | 10 |
| Bereavement and Grief Services..... | 11 |
| Blood Banks..... | 12 |
| Brain Cancer Resource..... | 13 |
| Breast Cancer Services and Resources | 13 |
| Cancer Clinics..... | 16 |
| Cancer Insurance..... | 17 |
| Childhood Cancers Resources | |
| Camps | 18 |
| Charitable Foundations and Services..... | 19 |
| Family and Patient Housing..... | 20 |
| Wigs For Kids | 20 |
| Wish Fulfillment..... | 20 |
| Families Affected by Cancer..... | 21 |
| Food and Drug Administration (FDA) Clinical Trials..... | 22 |
| Ground Transportation..... | 23 |
| Health Education..... | 24 |
| Hospitals..... | 26 |
| Medical Equipment and Supplies..... | 27 |
| Nutrition Counseling..... | 28 |
| Ovarian Cancer Resource..... | 29 |
| Patient and Family Housing..... | 30 |
| Prostate Cancer Resource..... | 30 |
| Retreats..... | 31 |
| Smoking Cessation and Tobacco Education..... | 32 |
| Treatment Side Effects Management..... | 33 |
| Alternative Therapeutic Approaches..... | 34 |
| Lymphatic Massage/Massage/Miscellaneous..... | 36 |
| Massage | 36 |
| Pain Management..... | 37 |
| Rehabilitation..... | 38 |
| Wigs..... | 39 |
| Appendix: Cancer Terminology Definitions..... | 41 |

**** The listings in this community referral resource manual are for reference only, and are not intended to be an endorsement, nor offer or replace medical advice.**

Air Transportation

Hawaii Life Flight

150 Lagoon Drive, Honolulu, Hawaii 96819

- Program Details: Hawaii Life Flight provides interisland aero-medical transport 24 hours a day, 7 days a week. Arranges medical escort transportation throughout the state of Hawaii, as well as transport to the mainland and international destinations. Employs critical care, intensive care and emergency room nurses (MICTs), paramedics, respiratory therapists and physicians for flights as necessary. Call for more information.
- Fee: Varies by flight
- Live Local 24 Hour Dispatch: 1-800-201-2911
- Oahu Phone #: (808) 836-2000
- Website: <http://hawaiilifeflight.com>

HMSA CAAP Program

816 Keeaumoku St., Honolulu, HI 96814

- Program Details: HMSA will provide preapproved airfare up to \$70 each way for patients who need to travel to a different island for treatment that is unavailable on their own island or if they need treatment sooner than their local facility can provide it.
- Fee: Free
- Eligibility: You must have a medical condition that cannot be treated on your home island. Call for more information.
- Phone #: (808) 948-6111
- Website: <http://www.hmsa.com>

Alternative Cancer Treatments

Hawaii Naturopathic Retreat Center, Inc.

239 Haili St., Hilo, HI 96720

- Program Details: Medical nutrition, meditation, yoga, exercise and psycho emotional therapies. We believe in the innate power of the body to heal and regenerate and our intervention only consists in supporting this natural process. We believe in treating the cause of disease rather than suppressing symptoms.
- Phone #: (808) 933-4400
- Website: www.hawaiinaturopathicretreat.com



Assistance - Food

Hawaii Meals on Wheels

P.O. Box 61194, Honolulu, HI 96839-1194

- Mission: Helping frail elders and individuals with disabilities preserve their independence at home by providing hot nutritious meals and regular personal contact.
- Eligibility: Convalescing from a hospital, lack the physical mobility to shop for food or am not capable of preparing meals due to inadequate cooking facilities. Lack the proper nutritional support from family members or caregivers. Must be able to feed self or have made arrangements to be fed.
- Fee: Voluntary contribution requested to cover meal costs
- Phone #: (808) 988-6747
- Website: <http://www.hmow.org>

Lanakila Pacific Meals on Wheels

1809 Bachelot Street, Honolulu, HI 96817

- Program: Home Delivery Service
- Program Details: Volunteers deliver meals Monday through Friday between the hours of 9 am and 2 pm. You must be available to accept the meals during these hours.
- Eligibility: Persons 60 years of age or older who are homebound, lack proper cooking facilities, or are unable to shop for and prepare nutritious meals for themselves.
- Fee: A suggested donation of \$4.00 per meal. Cash and checks are accepted. The amount you donate will not affect your service, nor will you be denied meals.
- Waitlist & Priority: Priority is given to seniors living in rural or isolated areas, low-income households, and/or more severe health conditions and disabilities.
- Phone #: (808) 531-0555; call the office to set up a referral so an outreach worker can assess the elder's needs.
- Website: <http://www.lanakilapacific.org>

Windward United Church of Christ

38 Kaneohe Bay Drive, Kailua, HI 96734

- Program Details: The WUCC's Food Distribution Program provides prepackaged bags of food (protein, fruit, starch, vegetables) every Wednesday from 10:30am-12 Noon at the Church's campus located at 38 Kaneohe Bay Drive, Kailua, HI 96734.
- Eligibility: Open to anyone in need
- Fee: Free
- Phone #: (808) 254-3802
- Website: <http://www.windwarducc.org>

Assistance - General Services

American Cancer Society

2370 Nuuanu Ave., Honolulu, HI 96817

- National Phone #: 1-800-227-2345
- Local Phone #: (808) 595-7544, Oahu Office
- Website: <http://www.cancer.org>
- Visit their website or call their Cancer Information Specialists 24 hours a day, 7 days a week to connect with your local chapter, services, and resources.

American Lung Association

810 Richards St., Suite 750, Honolulu, HI 96813

- National Phone #: 1-800-LUNGUSA (or 1-800-586-4872)
- Local Phone: (808) 537-5966, Oahu Office
- Website: <http://www.lung.org/associations/states/hawaii/>
- Visit their website or call their national help line to speak with Registered Nurses to connect you with information, your local chapter, services, and resources.

Aloha United Way

200 N. Vineyard Blvd., Suite 700, Honolulu, HI 96817-3938

- Program Details: Database for cancer-related services and resources searchable by island.
- Phone #: (808) 536-1951
- Website: <http://www.auw211.org/>

Catholic Charities Hawaii

Clarence T.C. Ching Campus, 1822 Keeaumoku Street, Honolulu, HI 96822

- Program: Comprehensive Social Services for Seniors
- Program Details: Provides assistance in developing/maintaining simple budgets, check writing, bill paying, etc. Provides advocacy, case management, counseling for psychological and social problems, and bereavement counseling. Comprehensive individualized services include assistance with filing out applications, shopping, escort, and housekeeping assistance. Also links family caregivers to private hire providers with limited financial support available.
- Fee: Free
- Website: <http://www.catholiccharitieshawaii.org>
- Help Line: Oahu (808) 521-4357; Hawaii (808) 935-4673
Maui (808) 873-4673; Kauai (808) 241-4673

Hawaii Children's Cancer Foundation

1814 Liliha Street, Honolulu, HI 96817

- Program: Assistance, support and advocacy for the needs of children diagnosed with cancer, their families and long-term survivors of childhood cancer.
- Program Details: Provides a wide range of services and program to families, including financial assistance, support groups, social events, education and advocacy.
- Fee: Free
- Phone: (808) 528-5161
- Website: <http://hccf.org>

Helping Hands Hawaii

2100 N. Nimitz Hwy., Honolulu, HI 96819

- Program: The Community Clearinghouse
- Program Details: Connects individuals and families in need of basic living necessities with donated clothing, furniture, appliances, and other household items.
- Eligibility: if you are interested in receiving help through the Community Clearinghouse, a case manager or social worker at another social service agency or outreach program must refer you to our program. The case manager / social worker must complete an intake application for you and submit verification of your household income to us. If you do not have an agency to refer you, please call our office at **440-3800** or call the Aloha United Way at 2-1-1 for a list of agencies that may be able to assist you.
- Phone #: (808) 440-3800
- Website: <http://www.helpinghandshawaii.org/home/>

Oncologist Database

- Details: Find & research oncologists (including specialties) on all the major Hawaiian Islands. Oncologist-approved cancer information from the American Society of Clinical Oncology.
- Website: <http://www.cancer.net>

Project Dana

2720 Nakookoo St., Honolulu, HI 96826

- Program Details: Services for the medically fragile and/or disabled adults and seniors. Interfaith cooperative services include home visits, telephone visits, respite care, family caregivers support, transportation for medical appointments, hospital & care home visits.
- Locations: 19 affiliate locations serving communities on 4 Hawaiian Islands, Oahu, Hawaii, Maui, & Kauai.
- Phone: (808) 945-3736 (Mon – Fri: 8:00 am to 5:00 pm. HST).
- Website: <http://www.projectdana.org>

University of Hawaii Cancer Center

701 Ilalo St., Suite 600, Honolulu, HI 96813

- The University Of Hawaii Cancer Center is considered to be the only National Cancer Institute-designated center in Hawaii and the Pacific. The Center's mission is to reduce the burden of cancer through research, education and patient care with an emphasis on the unique ethnic, cultural and environmental characteristics of Hawaii and the Pacific. The Center is a research organization affiliated with the University of Hawaii at Manoa with facilities located in downtown Honolulu and Kaka'ako. A new world-class cancer center is being constructed in Kaka'ako, with a scheduled opening in early 2013. Currently, the Center is conducting more than 100 cancer research projects in 4 interdisciplinary programs.
- Phone #: (808) 586-3010
- Website: <http://www.uhcancercenter.org/>

Assistance - Medical

Comprehensive Health Services for the Uninsured or Low-income Residents of a Particular Area or Population

Bay Clinic, Inc. Hilo Women's Health Center

73 Pu'uuhonu Pl., Suite 204, Hilo, HI 96720

- Cancer-Specific Programs Offered
 - Breast and Cervical Cancer Control Program (BCCCP): Funded through the State of Hawaii, Bay Clinic's BCCCP Program provides breast and cervical cancer screening services to women 50 to 64 of age, who are low income and have no or insufficient health insurance. Breast cancer is the most common cancer among American women and is second only to lung cancer as a cause of cancer related death. Many of these deaths, which will occur disproportionately among women of racial and ethnic minority and low-income groups, could be avoided by making cancer screening services available to all women at risk.
 - Susan G. Komen Breast Cancer Prevention Program: Funded by Susan G. Komen "For The Cure", Bay Clinic provides low-cost breast cancer screening and diagnostic services to women who due to age, or insurance status, do not qualify for our BCCCP program. This program "fills in the gap" in care so that all women can receive low-cost breast cancer diagnostic screening and diagnostic services.
 - Jean Curtis Fund: Funded by a grant in memory of Jean Curtis, the Jean Curtis fund supports screenings of the lung for those who cannot afford this service.
- Phone #: (808) 333-3500
- Website: <http://www.bayclinic.org>

Hana Health

4590 Hana Hwy, Hana, HI 96713

- Program Details: Hāna Health is a Federally Qualified Health Center serving as the “safety net” provider for the medically underserved population of the remote Hāna District, located in Maui County. Services are provided to all people regardless of their ability to pay. A sliding fee scale is available for primary health care services according to federal guidelines. Also offers cancer detection services.
- Phone #: (808) 248-7515
- Website: <http://www.hanahealth.org>

Hui No Ke Ola Pono

Hana Community Center, Hana, HI 96713

Walter Cameron Center, 95 Mahalani St. Room #21, Wailuku, HI 96793

- Program Details: Designed to eliminate disease and health risks to the Hawaiian community through programs specific to the general Hawaiian population. Emphasizes nutrition, pre-natal and perinatal care, immunizations and prevention and control of middle ear infections and diabetes. Promotes wellness and disease prevention. Provides referrals to physicians, physician assistants and nurse practitioners. Provides information and education in traditional Hawaiian healing practices such as Ho'oponopono (family or group counseling), La'au Lapa'au (Hawaiian herbal use) and Lomi Lomi (Hawaiian massage therapy). Also offers breast and cervical cancer screening.
- Fee: Nominal fee.
- Eligibility: Part Hawaiian; need to bring in birth certificate.
- Phone #: (808) 248-7502 Hana; (808) 244-4647 Wailuku
- Website: <http://www.hnkop.org>

Ke Ola Mamo

- Program Details: Ke Ola Mamo's physicians, nurses, dietitians, and social workers provide primary health care services to low income Native Hawaiians, including medical exams, help applying for free medication through Hawaii Prescription Care, help with medication management, health and nutrition education, and one-on-one nutrition education and mental health counseling.
- Cancer-specific Services: Breast and Cervical Cancer Prevention
- Locations: Honolulu, Kahuku, Waimanalo, and Waianae
- Fees: Sliding scale
- Phone #: (808) 845-3388 Honolulu; (808) 232-2222 Kahuku;
(808) 259-6666 Waimanalo; (808) 668-1110 Wai'anae.
- Website: <http://www.keolamamo.org>

Kokua Kalihi Valley Comprehensive Family Services

2239 N. School St., Honolulu, HI 96819

- Program Details: Comprehensive health services for the uninsured or low-income residents of Kalihi Valley on the island of Oahu.
- Cancer-specific Services: Breast and Cervical Cancer Control Program – free breast and cervical cancer screening for women 50 and over (or women under age 50 with a family history of breast cancer).
- Note: Numerous languages spoken
- Phone #: (808) 791-9400
- Website: <http://www.kkv.net>

Queen's Cancer Center

1301 Punchbowl Street, Honolulu, Hawaii 96813

- Program: Provides care for cancer patients. Provides a wide variety of services that include Spiritual, Educational and Rehabilitation.
- Program Details: Social work, Nutritional services, Pastoral care, Case management, infection control, IV therapy, Pain and palliative care services, respiratory care services, Rehabilitation services, Psychiatric consultations, Radiation and Pet therapy.
- Fee: Varies depending on services provided.
- Phone: (808) 691-1000
- Website: <http://queenscancercenter.org/treatment>

University of Hawaii at Hilo Women's Health Clinic

200 W. Kawili St., Campus Center Room 212, Hilo, HI 96720

- Program Details: Provides pelvic and breast exams, cancer detection services, STD (sexually-transmitted disease) testing and treatment, pregnancy tests, and contraceptive methods for both males and females.
- Population Targeted: Women attending UHH.
- Fee: Low-cost, varies depending on services provided. Most insurance carriers accepted.
- Phone #: (808) 974-7636
- Website: <http://www.hilo.hawaii.edu/studentaffairs/health/>



Waikiki Health Center

277 Ohua Ave., Honolulu, HI 96815

- Program Details: Ohua Clinic of Waikiki Health provides quality medical and social services that are accessible and affordable for everyone, regardless of ability to pay.

Medical care is provided by a multi-disciplinary care team, including physicians, physician assistants, nurse practitioners, medical assistants and others. Our comprehensive, fully-integrated system of services includes medical, behavioral health, HIV and Hepatitis C services, substance abuse treatment, medical nutrition therapy, medical and behavioral health case management, chronic disease management and traditional Hawaiian healing. Services include physical exams, preventive care, long-term treatment for chronic illnesses, health education, pediatric services, HIV early intervention services, immunizations, TB tests, family planning, tobacco cessation treatment, pain management and clinical breast-cancer screening.

- Fees: Sliding scale fee available.
- Phone #: (808) 922-4787
- Website: <http://www.waikikihealth.org>

Waimanalo Health Center

41-1347 Kalanianaʻole Hwy, Waimanalo, HI 96795

- Program Details: Comprehensive health services for the uninsured or low-income residents of Waimanalo on the island of Oahu.
- Cancer-specific Services: Breast and Cervical Cancer Control Program – free breast and cervical cancer screening for women 50 and over (or women under age 50 with a family history of breast cancer).
- Note: Numerous languages spoken
- Phone #: (808) 259-7948
- Website: <http://waimanalohealth.org>

Assistance - Utilities

Helping Hands Hawaii

2100 N. Nimitz Hwy., Honolulu, Hawaii 96819

- Program Details: Provides individuals and families who are homeless or at-risk of being homeless with emergency financial assistance that is aimed towards preventing homelessness or aiding those that are in transition.
- Phone no.: (808) 440-3836
- Website: www.helpinghandshawaii.org

Honolulu Community Action Program

33 South King Street, Suite 300, Honolulu, HI 96813

Low-Income Home Energy Assistance Program (LIHEAP)

LIHEAP assists low-income households in meeting their home energy needs. It gives priority to low-income households with a high energy burden and/or the presence of a "vulnerable" individual in the home, such as a child, disabled person, or frail senior. Priority is given to households with seniors, children, and/or medically fragile people.

Assistance includes financial assistance for energy bills, and other energy-related services, such as weatherization improvements, utility equipment repair and replacement, budgeting counseling, etc.

- Phone #: (808) 521-4531
- Website: <http://www.hcapweb.org/liheap.htm>

Bereavement And Grief Services

Castle Medical Center

640 Ulukahiki St., Kailua, HI 96734

- Bereavement Support Group meets every Tuesday, 7-8:30pm
- Location: Harry & Jeanette Weinberg Medical Plaza and Wellness Center (building in front and to the left of the Castle Medical Center)
- Fee: Free
- Phone #: (808) 263-5400 – no registration is required, call for more information
- To speak to someone immediately, please call the Chaplain's Office (808) 263-5343
- Website: castlemed.org/

Hospice Hawaii

- Services Offered: Bereavement services and counseling specific for children, families, spirituality, support groups, Family Camp, etc. are offered on all the major islands. Visit each island's website for details.
- Phone #: (808) 924-9255 Hawaii; (808) 969-1733 Hilo; (808) 324-7700 Kona; (808) 245-7277; (808) 244-5555
- Websites: <http://www.hospicehawaii.org/> - for Oahu
<http://www.hospiceofhilo.org>
<http://www.hospiceofkona.org>
<http://www.kauaihospice.org>
<http://www.hospicemaui.org>

BRING HOPE • REDUCE FEARS • IMPACT LIVES



Kokuau Mau

Honolulu, HI 96839

- Organization Details: Hospice and palliative care organization
- Phone #: (808) 585-9977 Please leave a voice message and they will call you back
- Email: info@kokuamau.org
- Website: <http://www.kokuamau.org>

Prayers on Wings

2888 Ala Ilima St. #2402, Honolulu, Hawaii 96818

- Program: Providing hope for children who are fighting for their lives by bridging the communication between caretaker, or whomever they wish to communicate with through art.
- Fee: Free
- Phone: (808) 341-5820
- Website: <http://prayersonwings.webs.com>

Blood Banks

Hawaii Bone Marrow Donor Registry

2228 Liliha St., Suite 105, Honolulu, HI 96817

- Program Details: The National Marrow Donor Program (NMDP) maintains a registry of more than 5.5 million adult potential donors -- the largest and most diverse in the world. These people have volunteered to donate cells for a marrow or blood cell transplant to any patient diagnosed with leukemia or other blood cancers. NMDP donor center staff recruits potential marrow or blood cell donors, inform them about the donation process, and act as donor advocates by looking out for the donor's best interests throughout the recruitment and donation process.
- Phone #: (808) 547-6154



Brain Cancer Resource

Brain Injury Association of Hawaii

200 N. Vineyard Blvd. #210, Honolulu, HI 96817

- Program Details: Provides support group for survivors of brain injuries and family caregivers. Provides literature, quarterly newsletter, monthly bulletin and videos.
- Fees: Membership dues
- Eligibility: Brain injury, encephalitis, stroke, anoxia, brain tumors, aneurysm.
- Phone #: (808) 436-8977
- Website: <http://www.biausa.org/hawaii>

Breast Cancer Services and Resources

Beauty Services

- Program Details: Look Good...Feel Better is a free service that teaches female cancer patients beauty techniques to help restore their appearance and self-image during chemo and radiation. Volunteer beauty professionals lead groups, usually of 6 to 10 women, through practical, hands-on experience. Women learn makeup techniques, skincare, nail care, and options related to hair loss (wigs, turbans, scarves). Each participant receives a free kit of sample size cosmetics for use during and after the workshop. This program is provided by the American Cancer Society.
- Fee: Free
- Eligibility: Women who are currently undergoing treatment for a cancer diagnosis (chemotherapy, radiation therapy, or other forms of treatment). Registration is required. Only program participants may attend the workshop. Due to confidentiality and comfort level of the patients, as well as space restrictions, this protocol is necessary. This ensures that the participant receives full attention to gain the skills and confidence for increased independence. A patient may attend more than one workshop; however, she should bring her LGFB cosmetic kit with her to the additional workshop. Patients with a recurrence of cancer and who are receiving another round of treatment may attend another workshop and receive a new cosmetic kit.
- Locations: Kapiolani Women's Center, Waianae Coast Comprehensive Health Center, Kaiser Permanente Moanalua Medical Center, Queen's Medical Center's Women's Center, Castle Wellness Center, and Pali Momi Medical Center.
- Phone no: (808) 595-7544 American Cancer Society Honolulu Office, please call for availability of the program at specific locations.
- Website: <http://lookgoodfeelbetter.org>

Breast Prostheses and Accessories

Honolulu Orthopedic Supply

855 Queen St., Honolulu, HI 96813

- Program Details: Honolulu Orthopedic Supply is a retail provider of breast prostheses and mastectomy bras. Call for appointment. Certified fitters available.
- Fee: Varies by product; accepts all major insurance and credit cards.
- Phone #: (808) 596-2588
- Website: <http://www.honoluluorthopedicsupply.com>

Me Again!

1329 Lusitana St., Queen's Physician's Office Building, Honolulu, HI 96813

- Program Details: Me Again! A retail provider of breast prostheses, breast forms, covers, bras, lingerie, and swimwear. Certified mastectomy fitting by owner Joan Matsuoka. By appointment only. Phone #: (808) 988-8004

Nordstrom In-Store Prosthesis Program

1519 Kapiolani Blvd., Ala Moana Shopping Center, Honolulu, HI 96814

- Program Details: Our Certified Prosthesis Fitters are specially trained to fit women for all intimate apparel following a mastectomy, lumpectomy or other reconstructive surgery. The following services and items are available in our comfortable, private Lingerie departments (selection may vary by store): enhancers/equalizers for lumpectomies and reconstructive surgery, mastectomy bras, amoena breast forms, post-mastectomy camisoles, and free pocketing on our collection of bras.
- Fee: Costs varies by product. Will submit paperwork for health insurance coverage.
- Phone #: (808) 953-6100 Fittings are usually done during general store hours, should call for appointment with fitter.
- Website: <http://shop.nordstrom.com/c/prosthesis-program>

“TLC” Tender Loving Care

American Cancer Society

- Program Details: Apart of American Cancer Society products, this direct ordering company offers women going through cancer treatments the following products: hats, turbans, twists, head wraps, halos for use under hats, scarves, wigs, cool comfort collection to aide with sleep during chemotherapy, breast prosthesis, bras, post-surgical necessities, pocketed comfort camisole to cope with radiation therapy, and accessories. Some products covered by Medicare.
- Ordering Phone #: 1-800-850-9445
- Website: <http://www.cancer.org/treatment/supportprogramsservices/tlc-a-magalog>

Information and Emotional Support

Reach to Recovery

Honolulu Chapter: 2370B Nuuanu Ave., Honolulu, HI 96817

- Program Details: Through face-to-face visits or by phone, Reach to Recovery volunteers give one-on-one support to any woman facing a possible breast cancer diagnosis, or who has recently been diagnosed with breast cancer or a recurrence. Volunteers are trained breast cancer survivors who can give emotional support and up-to-date information, including literature for spouses, children, friends, and other loved ones. This program is provided by the American Cancer Society.
- Fee: Free
- Phone #: (808) 595-7544 Patient Service Center
- Area Served: Check the website of the American Cancer Society for local area chapter office that offers the Reach to Recovery program.
- Website: <http://www.cancer.org>

Support Groups

Kuakini Health System

347 N. Kuakini St., Honolulu, HI 96817

- Program Details: This breast and prostate cancer support group meets once a month to discuss issues related to breast cancer and to lend emotional support to one another. Friends, family and caregivers welcome. Call for more information.
- Program Dates: Last Thursday of each month, 10:00am-12:00pm (Breast Cancer)
Second Wednesdays of each month, 7:00 pm – 9:00 pm (Prostate Cancer).
- Fee: Free
- Eligibility: Open to breast cancer patients and survivors and their friends, family and caregivers.
- Phone #: (808) 547-9562
- Website: <http://www.kuakini.org>

Breast Cancer Support at Queens Cancer Center

1301 Punchbowl St., Honolulu, HI 96813

- Program Details: A forum for women to discuss and share issues related to breast cancer. Parking will be validated.
- Fee: Free
- Eligibility: Breast cancer patients
- Phone #: (808) 691-8777
- Website: <http://www.queensmedicalcenter.org>

CLIMB program at Queens Cancer Center

1301 Punchbowl Street, Honolulu, Hawaii 96813

- Program Details: Arts and crafts program designed to help children of cancer patients cope with the emotional stress cancer can cause.
- Phone #: 691-8984
- Website: <http://www.queenscancercenter.org>

Hands on Healing at Queens Cancer Center

1301 Punchbowl Street, Honolulu, Hawaii 96813

- Program Details: A variety of art classes offered to cancer patients.
- Phone #: 691-8765
- Website: <http://www.queenscancercenter.org>

Cancer Clinics

Cancer Center of Hawaii

91-2135 Fort Weaver Road #B-120, Ewa Beach, Hawaii 96706

2226 Liliha Street #B2, Honolulu, Hawaii 96817

- Program Details: Provides care of cancer patients and their families and provides radiotherapy treatment, brachytherapy and total body irradiation treatment. Staff offer hope, encouragement, and education information and excellence in cancer care.
- Eligibility: Persons with cancer with family members.
- Fees: Fee for service
- Phone #: (808) 678-9000 Ewa Beach; (808) 547-6881 Honolulu
- Website: <http://cancercenterofhawaii.org>

Pacific Cancer Institute

227 Mahalani Street, Wailuku, Hawaii 96793-2526

- Program Details: State-of-the-art cancer treatment management and care. Consultations are given with appointment or referral. Affordable housing and transportation needs can be coordinated for off-island cancer patients. Cancer education and staff support for those under treatment.
- Fee: Fee for service
- Eligibility: Cancer patient
- Phone #: (808) 242-2600
- Email: charitablecancer@gmail.com

Pacific Cancer Foundation

95 Mahalani St., Suite 8, Wailuku, HI 96793

- Program Details: The mission of the Pacific Cancer Foundation is to provide access, knowledge, and support to all whose lives are touched by cancer in Maui County.
- Fee: Lectures and information are free. Other services vary.
- Eligibility: There is no eligibility to learn about clinical trials. However, only an Oncologist can enroll a patient in a cancer clinical trial. As a full-service cancer clinic, a wide range of services is offered for cancer patients, survivors, and their families for which the only requirement is that you are affected by cancer.
- Phone #: (808) 242-7661
- Website: <http://www.pacificcancerfoundation.org>

Cancer Insurance

AFLAC

- Program Details: American Family Life Assurance Company (aka Aflac) has a cancer/specified-disease insurance policy that is designed to provide you with cash benefits during covered cancer treatments. The supplemental cancer/specified-disease insurance policy can also help protect your income and savings from expenses that are not covered by your major medical health insurance policy, including deductibles, out-of-network specialists, experimental cancer treatment, travel and lodging when treatment is far from home, child care and household help, and normal living expenses, such as car payments, mortgage/rent, and utility bills.
- Phone #: 1-800-99-AFLAC (23522) or go to website to find a local sale coordinator listing
- Website: http://www.aflac.com/individuals/cancer_insurance.aspx



Childhood Cancers Resources

Camps

Camp Anuenue

Camp Mokuleia, North Shore, Oahu

- Program Details: A weeklong summer camp for children diagnosed with cancer, ages 7-17 years old. Provides an opportunity to build friendships with other children who are also fighting cancer or who are in remission from cancer. A pediatric oncology physician and pediatric oncology nurses are on the premises for the entire duration of the camp program. This program is provided by the American Cancer Society.
- Program Time: Annual event for one week in June at Camp Mokuleia on Oahu's North Shore.
- Fee: Free
- Eligibility: Must have been diagnosed with cancer between the ages of 0-17 years, registered with local ACS Hawaii Pacific Office, currently age 7-17 years old, and residing within the ACS Hawaii Pacific Region (Hawaii, Guam, and/or the Mariannas Islands). Patient must be covered by insurance.
- Phone #: (808) 489-7425
- Website: <http://campmokuleia.com/programs/honoulu-me-ka-ikaika/>

Camp Erin

Hospice of Kona, Inc., 75-5925 Walua Road, Kailua-Kona, HI 96740

- Program details: Bereavement camp designed for children ages 6-17 who have experienced the loss of a family member or friend.
- Email: CamperinHawaii@HospiceOfKona.org
- Phone: (808) 324-7700
- Website: <http://hospiceofkona.org>



Charitable Foundations/Services

Hawaii Children's Cancer Foundation

1814 Liliha Street, Honolulu, HI 96817

- Programs
 - Kokua Baskets: Care packages of comfort and information
 - Financial Assistance for expenses not covered by insurance including housing, utilities, & transportation.
 - College Book Reimbursement: Provides childhood cancer survivors attending college or a vocational training program with funds for the purchase of books, supplies, or equipment.
 - Frank Seleny College Scholarship
 - Annual Workshops
 - Childhood Cancer Connection Support Group
- Mission: Serving to assist, support, and advocate for the needs of children diagnosed with cancer, their families, and long-term survivors of childhood cancer.
- Fee: All services provided are free of charge to the families
- Phone #: (808) 528-5161
- Website: <http://www.hccf.org>

HUGS

3636 Kilauea Ave., Honolulu, HI 96816

- Program Details: HUGS (Help, Understanding, and Group Support) is an organization dedicated to providing support and enhancing the quality of life for Hawaii's seriously ill children and their families. Monthly family dinners, respites twice a month (usually on Fridays 5:30 – 9:30pm), mom's night, dad's night, and holiday parties.
- Fee: Free
- Eligibility: Child must be under the age of 21 and in active treatment for cancer.
- Phone #: (808) 732-4846
- Website: <http://www.hugslove.org>
-



Queen Lili'uokalani Children's Center, Lili'uokalani Trust

Oahu, Hawaii, Kauai, Maui Molokai

- Program Details: Provides grief counseling services, as well as, individual, couple and family counseling; and financial assistance for needs such things as back rent, enrichment, tutoring, food, trips, etc., but not college, funeral or private school.
- Fee: Free
- Eligibility: Must be at least one child under 18 year old, part-Hawaiian/Hawaiian, and lost at least one parent/guardian by death (or may be considered if terminally ill). Families are assessed one by one for need.
- Phone: 847-1302 (Honolulu); 851-7790 (Waimanalo); 668-2314 (Waianae); 293-8577 (Windward); 235-7613 (Ko`olau Poko and Lanai); 935-9381 (Hilo); 329-7336 (Kona); 245-1873 (Kauai); 242-8888 (Maui); 248-7218 (Hana); 774-8999 (Molokai)
Website: www.qlcc.org

Family and Patient Housing

Ronald McDonald House

- Program Details: Honolulu's two Ronald McDonald Houses (RMH) are a "home-away-from-home" for families that must come to Oahu seeking specialized medical treatments for their children's catastrophic illnesses. Both Houses provide a warm, dignified and supportive environment for families, and are located in lower Manoa Valley, near Kapiolani Medical Center for Women and Children and Shriners Hospital.
- Fee: \$20.00 per day
- Eligibility: Out-of-town pediatric patients receiving outpatient treatment or the parent/caregiver of an inpatient pediatric patient.
- Phone #: (808) 973-5683
- Website: <http://www.ronaldhousehawaii.org>

Wigs for Kids

Wigs for Kids

24231 Center Ridge Rd., Westlake, OH 44145

- Program Details: For over 30 years, Wigs for Kids has been providing Hair Replacement Systems and support for children who have lost their hair due to chemotherapy, radiation therapy, Alopecia, Trichotillomania, burns and other medical issues at no cost to children or their families.
- Phone #: (440) 333-4433
- Website: <http://www.wigsforkids.org>

Wish Fulfillment

Make-A-Wish Hawaii

223 S King Street, Honolulu, Hawaii 96813

- Program Details: We grant the wishes of children with life-threatening medical conditions to enrich the human experience with hope, strength and joy.
- Eligibility: We rely on wish referrals from caring individuals to help us reach more kids with life-threatening medical conditions every year and grant them a wish that changes lives, forever. The eligibility consideration process is initiated when a wish referral inquiry is submitted to the local chapter. Learn more about who is eligible for a wish, who can refer a child and how the referral process works. A child with a life-threatening medical condition who has reached the age of 2½ and is younger than 18 at the time of referral is potentially eligible for a wish. Medical professionals, parents, legal guardians and potential wish kids can initiate the referral process.
- Phone #: (808) 537-3118
- Email: info@hawaii.wish.org
- Website: <http://hawaii.wish.org>

Families Affected by Cancer

Chinese Christian Cancer Support Group

100 N. Beretania St., Suite 168A, Honolulu, HI 96817

- Hawaii Chinese Christian Mission Gospel Center offers a support group for Chinese cancer patients. The group meets once a month to discuss issues of importance to cancer patients and to lend emotional support to one another.
- Program Dates: Saturdays 11:00 a.m.-12 noon
- Fee: Free
- Eligibility: Must be a cancer patient and speak Mandarin.
- Phone #: (808) 232-4466
- Website: <http://cancer.ccmhawaii.org>



Food and Drug Administration (FDA) **Clinical Trials**

Center Watch

- At Center Watch, our mission is to be the leading source of clinical trials information for both clinical research professionals and patients. To support our mission, we offer several professional, educational and informative services and resources from news and analysis on the industry to trial listings seeking study volunteers. For more information, click on the links below under the appropriate category. Center Watch offers several services and resources specifically to patients. With our Clinical Trial Listing Service we are able to provide patients unbiased information on clinical trials, with a clinical trial database that contains thousands of currently enrolling trials. Information on drugs and new medical therapies are available to review. Center Watch also provides patients with health and educational resources about clinical trials and other health information.
- Website: <http://www.centerwatch.com/clinical-trials/listings/location/united-states/HI/>

Clinical Connections

- Mission: ClinicalConnection.com connects its 400,000+ members with clinical research trials. Join now to be notified when new clinical trials are available.
- Hawaii Clinical Trials: Clinical Connections is an online database for members only meant to connect clinical trials with potential patient volunteers. The website lists approximately 48 current clinical trials in numerous types of lung cancer taking place in Hawaii.
- Website: <http://www.clinicalconnection.com/lung-cancer-clinical-trials-in-honolulu-hawaii>

MedicineNet.com

- Details: Online database of current oncologists participating in cancer clinical trials in Honolulu.
- Website: http://www.medicinenet.com/breast_cancer_clinical_trials/honolulu-hi_city.htm



Ground Transportation

Angels on Wheels

2370 Nuuanu Avenue, Honolulu, Hawaii 96817

- Program Details: Provides volunteer-based transportation service restricted to cancer patients for medical treatments and appointments.
- Phone: (808) 595-7544

Cab and Handivan Vouchers

American Cancer Society

- Program Details: The American Cancer Society can provide cab and/or Handivan vouchers to qualifying cancer patients traveling for treatment in Oahu. Call for more information.
- Fee: Free
- Eligibility: Vouchers are for cancer patients traveling on Oahu for post-diagnosis cancer-related appointments.
- Phone #: 1-877-227-1618 Toll Free; (808) 595-7544

Charley's Taxi Medicab

1451 S King St. #300, Honolulu, HI 96814

- Program Details: MediCab offers you a safe, convenient way to be on time for appointments. Our specially trained drivers will escort you from your home to your doctor's office and pharmacy and back. To ensure passenger safety, we require all MediCab customers to use a wheelchair. You may provide your own, or we can bring one. Please call ahead at least 3 hours and advise nature of disability or need. At the doctor's office, have the nurse call the driver 10-15 minutes before patient is ready to leave. MediCab is not an ambulance service. Drivers are not paramedics.
- Eligibility: To serve the disabled/medically fragile.
- Fee: taximeter rate of elapsed time and distance, \$5 service fee, plus \$5 for driver to retrieve and return wheelchair from our office if needed.
- Phone #: (808) 533-3211
- Website: <http://charleystaxi.com/services/medicab/>



Road to Recovery

American Cancer Society

- Program Details: The Road to Recovery program provides transportation for cancer patients who are traveling for essential medical care related to a cancer diagnosis. This service is for cancer patients who have no means of transportation or are unable to drive themselves. Patients must be able to ambulate independently. Service is dependent on availability of drivers in the patient's area.
- Eligibility: This service is for cancer related appointments only; can only be used for transportation to and from an appointment - non-appointment stops are NOT an option. In most cases, at least 3 business day notices are required to request a ride. You must be ambulatory to use this service. Call for more information.
- Fee: Free
- Phone #: 1-877-227-1618 Telephone Patient Navigator; (808) 595-7544

Health Education

ABD: After Breast Cancer Exercise Program

Hawaii Pacific Health – Straub

- Program Details: A 5 week exercise program that meets once a week that is designed by breast cancer survivors and medical experts to help lead an active life after breast cancer surgery.
- Fee: \$38
- Phone #: (808) 527-2588 to register or can register online
- Website: <https://www.hawaiipacifichealth.org/health-wellness/classes>

Resource from American Cancer Society/Midwest

- Program Details: HEALTH CROSSES A CULTURE - is an 8-segment Hmong cancer DVD resource developed to educate Hmong men and women about cancer prevention and early detection. The information focuses on 6 types of cancer and healthy lifestyles. The introduction segment features local Hmong leaders speaking about the need for information and resources. The information is presented in Hmong with English subtitles. This Health Crosses a Culture DVD, Item #MW407.4, is only available to order from the American Cancer Society Pewaukee WI Office in the Midwest. Call to place an order for your own copy of this DVD. NATIVE AMERICAN BREAST CANCER AWARENESS - is a 12 minute DVD featuring Native American medical professionals and Native American women discussing the benefits and fears associated with breast cancer and breast cancer screening. This DVD also features testimonials of Native American breast cancer survivors. This Native American Breast Cancer Awareness DVD, Item #5621.00, is now available to order nationwide from the American Cancer Society. Call to place an order for your own copy of this DVD.

I Can Cope Cancer Class

Kaiser Permanente, 3288 Moanalua Rd., Honolulu, HI 96819

- Program Details: Offers a class for people and their families facing cancer for the first time. Addresses commonly expressed concerns, useful resources, and insight from other cancer survivors. Many resources available with some practical advice by trained professionals. Focus of this program is educational. Pre-registration required.
- Fee: Free Eligibility: Adults with cancer and their families.
- Phone #: (808) 432-2260
- Website: <http://www.kaiserpermanente.org> or www.pacificcancerfoundation.org

Healing Movement for Cancer Patients

Kaiser Permanente Kihei Clinic, 1279 South Kihei Road, Suite 120, Kihei, Hawaii, 96753

- Program Details: Offers a class to cancer patients and survivors. The class uses gentle movements of Dragon & Tiger Chi Gung to release stress and maintain strength and energy. Classes are held every Friday from 3:00 – 4:00 pm and are done in collaboration with Pacific Cancer Foundation and YMCA.
- Fee: Free
- Eligibility: Cancer patients and cancer survivors
- Phone #: (808) 268-9622
- Website: <http://www.kaiserpermanente.org> (or) www.pacificcancerfoundation.org

Queen's Cancer Center

1301 Punchbowl Street, Honolulu, Hawaii 96813

- Program: Provides a wide variety of services that include Spiritual, Educational and Rehabilitation.
- Program Details: Social work, Nutritional services, Pastoral care, Case management, infection control, IV therapy, Pain and palliative care services, respiratory care services, Rehabilitation services, Psychiatric consultations, Radiation and Pet therapy.
- Fee: Varies depending on services provided.
- Phone: (808) 691-1000
- Website: <http://queenscancercenter.org/treatment>
-



QUEEN'S CANCER CENTER

Hospitals

Hawaii Health Systems Corporations

3675 Kilauea Avenue, Honolulu, Hawaii 96816

- Locations: Owns & operates 15 hospitals, clinics, emergency care, and long-term care facilities throughout the Hawaiian Islands. Locations include Hilo Medical Center, Hale Hoolau Hamakua, Kau Hospital, Yukio Okutsu State Veterans Home, Kona Community Hospital, Kohala Hospital, Kauai Veterans Memorial Hospital, Samuel Mahelona Memorial Hospital, Maui Memorial Medical Center, Lanai Community Hospital, Leahi Hospital, Maluhia, Kahuku Medical Center, Alii Health Center, and Kula Hospital.
- Phone #: (808) 733-4020
- Website: hhsc.org

Kapiolani Women's Cancer Center (services offered at four locations)

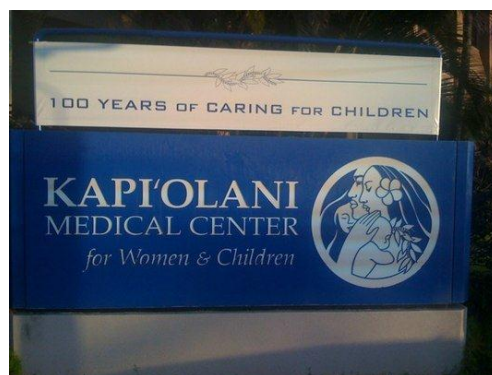
Kapiolani Women and Child: 1319 Punahou Street, Honolulu, Hawaii, 96826

Pali Momi: 98-1079 Moanalua Road, Aiea, Hawaii 96701

Straub: 888 S King Street, Honolulu, Hawaii 96813

Wilcox: 3-3420 Kuhio Way, Lihue, Hawaii 96766

- Program Details: Provides screening and diagnostic mammography. Offers breast and pelvic ultrasound. Provides ultrasound guided breast cyst aspiration and core biopsy. Provides stereotactic (non-surgical) breast biopsy. Offers osteoporosis diagnostic testing with DEXA scan, massage therapy, continence program (urinary, female) physical therapy (post breast surgery), and pelvic floor (post-incontinence work-up). Provides psychological counseling, Tai Chi classes, and yoga and aerobic classes. Provides genetic counseling for breast cancer and a lymphedema treatment program. Offers a menopause support group.
- Targeted Population: Women aged 30 and older.
- Fees: Vary depending on services provided.
- Phone #: (808) 983-6090 Kapiolani; (808) 486-6000 Pali Momi; (808) 522-4000; (808) 245-1030
- Website: <https://www.hawaiipacifichealth.org/kapiolani/>



Queen's Cancer Center

1301 Punchbowl Street, Honolulu, Hawaii 96813

- Program: Provides a wide variety of services that include Spiritual, Educational and Rehabilitation.
- Program Details: Social work, Nutritional services, Pastoral care, Case management, infection control, IV therapy, Pain and palliative care services, respiratory care services, Rehabilitation services, Psychiatric consultations, Radiation and Pet therapy.
- Fee: Varies depending on services provided.
- Phone: (808) 691-1000
- Website: <http://queenscancercenter.org/treatment>

Wilcox Health

3-3420 Kuhio Highway, Lihue, Hawaii 96766

- Locations: Comprehensive cancer care for adults and children. Support programs for patients and their families in order to cope with the challenges of cancer and treatment.
- Fee: Varies
- Website: <http://www.wilcoxhealth.org/about-us.aspx>
- Phone #: (808) 247-1030

Medical Equipment and Supplies

Ace Medical, Inc.

Honolulu and Waipahu

- Program Details: Ace Medical, Inc. carries an extensive inventory of home health care products.
- Waipahu (Main) Location: 94-910 Moloalo St., Waipahu, HI 96797
- Honolulu Location: 2130 S. Beretania St., Honolulu, HI 96826
- Phone #: (808) 678-3600
- Website: <http://www.acemedicalinc.com>
-
-



Apria Healthcare

98-720 Kuahao Pl., Pearl City, Hawaii 96782

431 Alamaha St., Suites 2 and 3B, Kahului, Hawaii 96732

- Program Details: Offers full range of respiratory services including oxygen concentrators, liquid oxygen systems, cylinder oxygen systems and oxygen conserving devices. Has respiratory equipment including nebulizers, continuous positive airway pressure ventilation, and high-tech ventilators. Also provide home delivered respiratory medications including bronchodilators, mast cell inhibitors, corticosteroids, mucolytic, mucolytic enzymes and anticholinergics.
- Phone #: (808) 492-7742 Pearl City; (808) 871-4267 Kahului; (808)
- Website: <http://www.apria.com>

Medic ID's International, Inc.

- Program Details: Offer medical alert identification bracelets and pendants. Order online.
- Website: <http://www.medicid.com>

Nutrition Counseling

Hawaii Naturopathic Retreat

239 Haili Street, Hilo, HI 96720

Program Description: Specializes in holistic mind-body-spirit medicine. Program treats residential and outpatients. The program provides a nurturing environment and tools to restore a long, happy, and responsible life. Services provided are detoxification, natural drug rehabilitation, wellness programs and healthy vacations.

Phone No.: (808) 933-4400

Email: contact2013@hawaiinaturopathicretreat.com

Website: <http://www.hawaiinaturopathicretreat.com>

Cancer Nutrition at Queens Cancer Center

1301 Punchbowl St., Honolulu, HI 96813

- Program Details: Offers a free weekly class on cancer nutrition for those who have completed cancer treatment. Class focuses on good nutrition after treatment and is led by a Registered Dietician.
- Fee: Free
- Eligibility: open to those who have completed cancer treatment.
- Phone No.: (808) 691-7117 to register
- Website: <http://www.queenscancercenter.org>

Nutritional Counseling by Straub's Cancer Center

888 South King Street, Honolulu, Hawaii 96813

- Program Details: Program Details: Offers a free weekly class on cancer nutrition for those who have completed cancer treatment. Class focuses on good nutrition after treatment and is led by a Registered Dietician.
- Phone No.: (808) 522-4000
- <https://www.hawaiipacifichealth.org/straub/services/cancer-care/>

Ovarian Cancer Resource

Ovarian Cancer Support Group

Kapiolani Women's Center, 1907 S. Beretania St., Honolulu, HI 96826

- Program Details: Hui O Ola, Oahu's Ovarian Cancer Support Group provides hope, support and information to women who have been diagnosed with ovarian cancer. Some are recently diagnosed, some are long-term survivors...all know what you're going through and want to help! They meet one evening a month and welcome new members.
- Program Dates: Every fourth Thursday of every month, 6:00 pm to 8:00 pm.
- Fee: Free
- Eligibility: Open to ovarian cancer patients
- Phone #: (808) 527-2588



Patient and Family Housing

Hotel Partner Program

American Cancer Society

- Program Details: Guest Room is a program of the American Cancer Society that provides lodging for cancer patients who are traveling in order to receive medical care related to a cancer diagnosis. This service is made possible by an agreement between the American Cancer Society and participating hotels, and, when available, rooms are provided for a significantly reduced cost, or, in some cases, for free. Program availability depends on hotel participation in the area. Call for more information.
- Fee: Low-cost to free, depending on availability.
- Eligibility: Note that this program does not exist in all counties at all times. Where it does exist, the following guidelines apply: In most cases, requests need to be made at least 2 Fridays in advance of the date the room is needed. The Guest Room Program is available Sunday through Thursday nights. Occasional exceptions can be made if there is a medical necessity. In most cases, a patient must travel at least 50 miles one way in order to qualify for this program; in some cases, exceptions can be made to this policy. Lodging is for cancer patients traveling for outpatient medical care related to their cancer diagnosis. A caregiver can travel with the cancer patient as needed. Call for more information.
- Phone #: 1-800-227-2345
- Website: <http://www.cancer.org/>

Prostate Cancer

“Us Too” A Prostate Cancer Support Group

Kuakini Health System, 347 N. Kuakini St., Honolulu, HI 96817

- Program Details: A support group for prostate cancer patients at Kuakini Health System, PB5 Classroom. All family, friends, caregivers, and significant others are welcome.
- Program Dates: 2nd Wednesday of each month, 7:00-9:00pm
- Fee: Free
- Eligibility: Must be a prostate cancer patient, or the friend, caregiver or family member of a prostate cancer patient.
- Phone #: (808) 547-9252 or (808) 547-9788 for Education Services Department



Pali Momi Medical Center

98-1079 Moanalua Rd., Aiea, HI 96701

- Program Details: Prostate Cancer Support Group - provides a free support group for prostate cancer patients, spouses and significant others. The group provides fellowship, peer counseling and discussion of medical alternatives.
- Program Dates: 3rd Thursday of each month, 7:00-9:00pm
- Fee: Free Phone #: (808) 486-9675
- Website: [http:// www.hawaiipacifichealth.org/pali-momi](http://www.hawaiipacifichealth.org/pali-momi)

Retreats

Hawaii's Natural Wellness Retreat

Honolulu, HI

- Program Details: provides a family style in-home detoxification, fasting and health rejuvenation programs on the island of Oahu in Hawaii. Hawaii's Wellness Retreat Center provides care for all kinds of clients and health conditions with effective natural therapies and treatments supporting you with the insight and strategies for better health. Retreats held weekly. See website.
- Phone: (808) 988-0800
- Website: <http://drferchoff.com/index.htm>

Kokolulu Farm and Cancer Retreats

P.O. Box 340, Hawi, HI 96719

- Program Details: Kokolulu Farm and Cancer Retreats Inc. is a 501 (c) (3) non-profit public charity organization (01-0954321) that provides education and charitable assistance to those affected by cancer by providing holistic healing retreats, research publications, and sharing tools that empower participants to take charge of their own healing journey.
- Phone #: (808) 889-9893
- Email: lew@kokolulu.com
- Website: <http://cancer-retreats.org>



Smoking Cessation and Tobacco Education

Castle Medical Center, Health & Wellness

642 Ulukahiki St., Kailua, HI 96734, (808) 263-5500

Smoking Cessation Program by Castle Medical Center

- Program Details: An intensive stop smoking program for individuals. Includes behavioral, nutritional and lifestyle methods with doctor approved stop smoking meds.
- Fee: Free
- Eligibility: Open to the public, anyone age 18 and over

Smoking Cessation Support Group by Castle Medical Center

- Program Details: Ongoing talk story group facilitated by an experienced Tobacco Treatment Specialist. Open to ex-smokers, current smokers thinking about quitting, and family and friends supporters.
- Fee: Free
- Eligibility: Open to anyone who wants to quit, as well as their friends, family, and supporters.

Hawaii Tobacco Quitline

- Program Details: The Hawaii Tobacco Quitline is a FREE and confidential telephone service available for anyone who wants to quit tobacco use. Quit coaches are available to help create a quit plan that can include patches or gum. Other available services include: printed materials, guidance on medication, online tools and access to a Web Coach.
- Eligibility: Anyone who wants to quit smoking
- Phone #: 1-800-QUIT-NOW (784-8669)
- Website: <http://www.clearthesmoke.org>

Tobacco and Nicotine Treatment

Straub Clinic & Hospital, Inc.

888 S. King St., Honolulu, HI 96813

- Program Details: Offers classes on weight management, smoking cessation and stress management. Teaches aerobics. Offers programs on coping with cancer. Provides one-on-one consultations on stress management.
- Fee: Free
- Eligibility: Open to the public
- Phone #: (808) 945-1494
- Website: <https://www.hawaiiapacifichealth.org/health-wellness/classes/general-classes/tobacco-and-nicotine-treatment-kapiolani/>

Treatment Side Effects Management

Acupuncture, Herbs

Acupuncture

Queens Cancer Center, 1301 Punchbowl St., Honolulu, Hawaii 96813

- Program Details: Acupuncture is offered as treatment for the alleviation of cancer care side effects including pain, anxiety, depression, fatigue, nausea/vomiting, shortness of breath, edema, dry mouth, headache, insomnia, neuropathy, diarrhea/constipation, loss of appetite, and more.
- Fee: Varies by treatment service, please call receptionist for details.
- Eligibility: cancer patients.
- Phone #: (808) 545-8777
- Website: <http://www.queenscancercenter.org>

Institute of Clinical Acupuncture and Oriental Medicine

Chinatown Cultural Plaza, 100 N. Beretania St., Suite 203B, Honolulu, HI 96817

Waimea Town Plaza, 64-1061 Mamalahoa Hwy., Suite 103, Kamuela, Hawaii 96743

- Program Details: Offers acupuncture treatments for cancer patients struggling with side effects from treatment.
- Fee: Initial Consultation & Acupuncture Treatment \$40 (effective Sept. 1, 2011) on Mondays, Wednesdays, Fridays, and Saturdays. Allow 1 hour and 30 minutes for your consultation with treatment given by Master student intern with licensed acupuncturist. Follow-up treatments, herbs, etc. varies.
- Phone #: (808) 521-2288
- Website: <http://www.orientalmedicine.edu/home.htm>

Integrated Medicine Oahu

1314 S. King St., #1050, Honolulu, HI 96814

- Program Details: Since 2008, The Queen's Medical Center (QMC) in Honolulu, HI is pleased to have Jayne Tsuchiyama, MS, Dipl. OM, L.Ac, provide Acupuncture Services to the Cancer Center, a comprehensive, multidisciplinary cancer treatment and research center. Ms. Tsuchiyama is certified in Cancer Care Acupuncture by Memorial Sloan Kettering (NY).
- Eligibility: If you are a breast cancer patient or survivor who is unemployed or uninsured, you may qualify to receive acupuncture treatments at no charge to you through a Susan G. Komen grant.
- Queen's Cancer Center Phone #: (808) 691-8777
- Email: jtsuchiyama@queens.org
- Phone #: (808) 946-9400, Private Practice Office
- Email: info@imoahu.com
- Website: <http://www.imoahu.com>

ALTERNATIVE THERAPEUTIC APPROACHES

BOOKS

The Cancer-Fighting Kitchen: Nourishing, Big-Flavor Recipe's for Cancer Treatment and Recovery

Purchase on Amazon.com

- Book Description: The Cancer-Fighting Kitchen features 150 science-based nutrient-rich recipes that are easy to prepare and designed to give patients a much-needed boost by stimulating appetite and addressing treatment side effects including fatigue, nausea, dehydration, mouth and throat soreness, taste bud changes, and weight loss.
- Authors: Rebecca Katz and Mat Edelson
- Email: <http://www.amazon.com>

Stop Fighting Cancer and Start Treating the Cause

Purchase on Amazon.com

- Book Description: Cancer is a very scary word; but it doesn't have to be. Conventional approaches are aimed at de-bulking a growing cancer, never addressing what drives it. Why do I have cancer? Is there a cause that needs to be addressed? This book will help answer these questions and give hope beyond standard medical approaches.
- Author: Dr. Kevin S. Connors
- Website: <http://www.amazon.com>

Treating Cancer with Herbs: An Integrative Approach

Purchase on Amazon.com

- Book Description: A complete systematic approach to cancer from a holistic perspective
- Author: Dr. Michael Tierra, L.Ac., N.D., AHG
- Website: <http://www.amazon.com>



What to Eat During Cancer Treatment

Cookbook can be purchased on Amazon.com

- What to Eat During Cancer Treatment: 100 Great-Tasting, Family Friendly Recipes to Help You Cope – by the American Cancer Society
- Cookbook Description: This cookbook contains 100 fast, flavorful recipes to help both patient and caregiver prepare satisfying meals to combat some of the side effects of treatment. Recipes are organized by side effects and include Brie and Apple Grilled Cheese to deal with nausea, Lemon Egg-Drop Soup for diarrhea, Blueberry-Peach Crisp for constipation, a Sherbet Shake for sore mouth, and Honey-Teriyaki Salmon for taste alterations.
- Authors: Jeanne Besser, Kristina Ratley, Sheri Knecht, and Michele Szafranski
- Website: <http://www.amazon.com>

PROGRAMS

Healing Touch Hawaii

P.O. Box 223751, Princeville, HI 96722

- Program Details: Healing Touch, developed by Janet Mentgen RN, BSN, is a type of complementary healing using hands-on and energy-based techniques to balance and align the human energy field. Body, mind, emotion and spirit are touched through this therapeutic process, and each individual is empowered to participate fully in his or her healing journey. Healing Touch is a different and complementary mode of facilitating the healing process, but functions from an energy perspective rather than only a physical one. The Healing Touch practitioner re-aligns the energy flow, re-activating the mind, body, spirit connection to eliminate blockage to self-healing. Healing Touch practitioners operate on all islands, in a variety of settings.
- Website: <http://www.healingtouchhawaii.net>

The Wellness Center Hawaii

1016 Kapahulu Avenue, Suite 110, Honolulu, HI 96816

- Program Details: Provides tools that can help relieve pain through Pulsed Electro-Magnetic Field (PEMF), Infrared Sauna, Beam Ray Technology, Bio surveys, Perception reframing and Diet Planning.
- Phone No. (808) 732-5363
- Website: <http://www.thewellnesscenterhawaii.com/>



Lymphatic Massage

Zen Health Center & Spa

1188 Bishop St., Suite 3301, Honolulu, HI 96813

- Program Details: Lymphatic massage, also called lymphatic drainage or manual lymph drainage, is a technique developed in Germany for treatment of lymphedema, an accumulation of fluid that can occur after lymph nodes are removed during surgery, most often a mastectomy for breast cancer. Frequently, diabetic and pre-diabetic patients have lymphedema in their arms and legs. Lymphedema can also be present at birth or develop at puberty or during adulthood. This type, known as primary lymphedema, can affect as many as four limbs and/or other parts of the body. Up to 25 percent of breast cancer patients whose surgery includes removal of lymph nodes in the area of the armpit eventually develop lymphedema. The condition can also occur in the legs or other parts of the body if lymph nodes are removed in the course of other types of surgery – for melanoma, colon, prostate or bladder cancer, for example – or are damaged by radiation treatment, infection or trauma. Symptoms include swelling and pain near the site of the removed or damaged lymph nodes.
- Fees: Varies by service and time of treatment; some insurance accepted to cover some services.
- Phone #: (808) 599-2700 Website: <http://thezencenter.com>

Massage

A Time to Heal Cancer Care Program

- Program Details: Provides massages to those living with cancer. Each cancer care massage is from 45 to 55 minutes in length. This is Hawaii's first business that specializes in cancer care massages.
- Fee: Little or no charge.
- Eligibility: Current patient undergoing treatment and living with cancer.
- Phone #: (808) 674-8886
- Website: <http://www.atimetohealhawaii.com>



Pain Management

Hawaii Pain Management

Hawaii Wellness Systems, 615 Piikoi St., Suite 1602, Honolulu, HI 96814

- Program Details: Hawaii Wellness Systems uses a holistic approach to chronic pain management. We have developed techniques that work with the body, the mind and the spirit to provide you with relief and the ability to once again live a functional life. While we do not provide prescription drug treatment for pain, our program can enhance existing pain treatment and in many cases, reduce prescription drug usage. All participants must have medical management outside our program. If you do not currently have a doctor, we may be able to provide you with a referral. HWS harnesses the power of the latest scientific chronic pain research and incorporates these findings into cutting-edge pain management tools. The program incorporates three core areas: Relationship to Pain, Mind-Body Management and Emotional Support.
- Phone #: (808) 426-8486
- Website: <http://hawaiiwellnesssystems.com>

Hawaii Institute of Pain

1401 South Beretania Street, Suite 400, Honolulu, Hawaii 96814

- Program Details: Dr. Jerald Garcia, M.D. is an interventional Pain Specialist who focuses on treating a variety of pains including cancer pain.
- Fee: Fee for service
- Phone #: 206-5301
- Website: <http://www.hipain.com/contact.html>

Medical Marijuana of Hawaii

Oahu, 41-1300 Waikupanaha Street, Waimanalo, Hawaii 96795

Kauai, 4585 Lehua Street, #11, Kapaa, Hawaii 96746

- Program Details: Dr. David J. Barton MD is certified in Pain Medicine by the American Board of Pain Medicine. He functions through his medical clinic that qualifies each patient according to the law and the appropriate standards of medicine to be able to participate in the use of medical marijuana. His interests are chronic pain and end of life care.
- Phone #: (808) 321-3793
- Website: <http://www.medicalmarijuanaofhawaii.org>



Pain Medicine and Rehabilitation

Dr. Damien Tavares, MD, Weinberg Medical Pavilion, 2226 Liliha Street, Suite 403, Honolulu, Hawaii 96817

- Program Details: Dr. Tavares specializes in medical treatment to relieve pain and to restore function and quality of life to his patients.
- Phone #: (808) 445-9172
- Program Details: <http://www.pmrhawaii.com/>

Rehabilitation

Imua Physical Therapy

Kihei, 380 Huku Li'i Place, Suite 105, Kihei, Hawaii 96753

Honokowai, 3350 Lower Honoapi'ilani Road, Lahaina, Hawaii 96761

Lahaina, 40 Kupuohi Street, Keawe Business Center, Lahaina, Hawaii 96761

Wailuku, 223 S. Market Street, Wailuku, Hawaii, 96761

- Program Details: Along with Physical Therapy and Massage Therapy, specialized cancer-services offered Lymphedema Treatment and Oncology Post-Surgery Rehabilitation.
- Phone #: (808) 879-0077 Kihei; (808) 669-0078 Honokowai; (808) 661-0077 Lahaina; (808) 879-0077
- Website: <http://www.imuapt.com>

OrthoSport Hawaii

Physical Therapy, Aquatic Rehabilitation & Sports Conditioning

5722 Kalaniana'ole Hwy., Honolulu, HI 96821

- Program Details: Ai Chi Water Class is aquatic tai chi with shiatsu and qigong techniques. Could be beneficial for the following conditions or side effects of cancer treatments: Pain management, Scoliosis, Carpal tunnel syndrome, Hypertension, CVA, Fatigue, Eating behaviors, Weight control, Breast cancer patients, Balance deficits, Type II Diabetes, back pain, Cardiac/pulmonary rehab, COPD, Cancer therapy, Arthritis, Fibromyalgia, congestive heart failure, fall prevention, prenatal, menopause therapy, immunodeficiency disorders, orthopedic problems, mastectomy, RSD, MS, migraine headaches, anxiety, depressive disorders, and anger management.
- Phone #: (808) 373-3555
- Website: <http://www.orthosport.com>



Rehabilitation Hospital of the Pacific

REHAB at Nuuanu, 226 N. Kuakini St., Honolulu, HI 96817

REHAB at Aiea, Pearlridge Center – Phase 2, 98-1005 Moanalua Road, Suite 425, Aiea, Hawaii 96701

REHAB at Hilo, 76 Puuhonu Place, Hilo, Hawaii 96720

- Program Details: inpatient General Rehabilitation program provides acute rehabilitation for individuals with arthritis, cancer, cardiac disease, Multiple Sclerosis, Parkinson's Disease, Guillan-Barre Syndrome and functional decline secondary to prolonged medical illness and neurological disorders. Rehabilitation program addresses the issues associated with limited mobility caused by the above to avoid other complications such as: pressure bed sores, decreased strength, balance and endurance which impacts functioning in everyday tasks. Patients also have access to a wide array of other services including a Rehabilitation Psychologist, Dietician, therapy modalities of speech, occupational, aquatic, animal assisted, and cooking, and a creative arts program.
- Phone #: (808) 544-3310 Nuuanu; (808) 486-8000; (808) 961-5776 Hilo.
- Website: <http://www.rehabhospital.org>

Wigs

Anton's Hair

13240 NE 20th, Suite 11, Bellevue, WA 98005

- Program Details: We are your professional wig makers. Are you or someone you care about facing an impending hair loss situation? Anton's Hair Company offers custom-made wigs and partial hair additions for women facing hair loss. Our unique specialty is making wigs from a woman's own hair prior to chemotherapy's effects. Provides retail wigs, accessories and styling services. Over 90% of the wigs are custom made. Wigs can be made from clients' own hair. If an individual is unable to come to the store, Anton's will send instructions on how to measure their head and how to cut the hair. Please call for additional information.
- Fee: Varies based on product or service.
- Phone #: (425) 562-7979
- Email: kswigmaker@aol.com
- Website: <http://www.antonshair.com>



It's A Wrap and Good Wishes Scarves

Provided by L. Erickson USA

- Program Details: Our mission is simple: to provide free of charge, one beautiful It's a Wrap© or Good Wishes Scarf to anyone experiencing the thinning or loss of hair as a result of illness or treatment. Our goal is to in some small way ease their journey, provide a small bit of comfort and share the power of positive thinking and good wishes with these individuals on their path to healing and recovery. **How It Works:** When possible, we ask people or their friends and loved ones, to choose three or more fabrics that suit their taste and style and then contact us through our online request form, by phone (888-778-5998) or e-mail (info@goodwishesscarves.org). We then send a wrap or scarf in a fabric of their choosing directly to these individuals along with the support and Good Wishes of all of our staff! If someone does not have access to the internet, we are more than happy to talk with them about their pattern and color preferences to select something beautiful for them. [Shipping may take 3-6 weeks depending upon stock and demand. International requests will need to pay shipping costs only.] Fee: Free
- Eligibility: Cancer patients experiencing the loss or thinning of hair due to chemotherapy treatment.
- Phone #: 1-888-778-5998
- Email: info@goodwishesscarves.org
- Website: <http://www.goodwishesscarves.org>

Salon 808

1585 Kapiolani Blvd., #710, Honolulu, HI 96814

- Program Details: Salon 808 offers wholesale priced wigs to cancer patients. Call for an appointment.
- Fee: Wholesale, call for pricing
- Eligibility: Individuals with cancer-related hair loss.
- Phone #: (808) 942-7799



Appendix: Cancer Terminology Definitions

Source: National Cancer Institute
<http://www.cancer.gov/>

A

ABCD rating: A staging system for prostate cancer that uses ABCD. “A” and “B” refer to cancer that is confined to the prostate. “C” refers to cancer that has grown out of the prostate but has not spread to lymph nodes or other places in the body. “D” refers to cancer that has spread to lymph nodes or to other places in the body. Also called Jewett staging system and Whitmore-Jewett staging system.

Abdomen: The area of the body that contains the pancreas, stomach, intestines, liver, gallbladder, and other organs.

Abdominal ultrasound: A procedure used to examine the organs in the abdomen. An ultrasound transducer (probe) is pressed firmly against the skin of the abdomen. High-energy sound waves from the transducer bounce off tissues and create echoes. The echoes are sent to a computer, which makes a picture called a sonogram. This is also called a transabdominal ultrasound.

Abdominoperineal resection: Surgery to remove the anus, the rectum, and part of the sigmoid colon through an incision made in the abdomen. The end of the intestine is attached to an opening in the surface of the abdomen and body waste is collected in a disposable bag outside of the body. This opening is called a colostomy. Lymph nodes that contain cancer may also be removed during this operation.

Abnormal: Not normal. Describes a state, condition, or behavior that is unusual or different from what is considered normal. An abnormal lesion or growth in or on the body may be benign (not cancer), precancerous or premalignant (likely to become cancer), or malignant (cancer).

ABO blood group system: A system used to group human blood into different types, based on the presence or absence of certain markers on the surface of red blood cells. The four main blood types are A, B, O, and AB. For a blood transfusion, the ABO blood group system is used to match the blood type of the donor and the person receiving the transfusion. People with blood type O can donate blood to anyone and are called universal donors. People with blood type AB can accept blood from all donors and are called universal recipients. People with type A or B can receive matching blood or type O blood.



Abscess: An enclosed collection of pus in tissues, organs, or confined spaces in the body. An abscess is a sign of infection and is usually swollen and inflamed.

Absolute risk: A measure of the risk of a certain event happening. In cancer research, it is the likelihood that a person who is free of a specific type of cancer at a given age will develop that cancer over a certain period of time. For example, a woman 35 years of age, with no known risk factors for breast cancer, has an absolute risk of getting breast cancer over a lifetime of 90 years of about 13.5%, meaning one out of every seven women will develop breast cancer.

Accelerated partial-breast radiation: A type of radiation therapy given only to the part of the breast that has cancer in it. Accelerated partial-breast irradiation gives a higher dose over a shorter time than is given in standard whole-breast radiation therapy. Accelerated partial-breast irradiation may be given using internal or external sources of radiation, also called partial-breast irradiation.

Accelerated radiation therapy: Radiation treatment in which the total dose of radiation is given over a shorter period of time (fewer days) compared to standard radiation therapy.

Acupoint: A specific spot on the body where an acupuncture needle may be inserted to control pain and other symptoms. Also called acupuncture point.

Acupressure: The application of pressure or localized massage to specific sites on the body to control symptoms such as pain or nausea. It is a type of complementary and alternative medicine.

Acute: Symptoms or signs that begin and worsen quickly; not chronic.

Acute leukemia: A rapidly progressing cancer that starts in blood-forming tissue such as the bone marrow, and causes large numbers of white blood cells to be produced and enter the blood stream.

Acute radiation sickness: Serious illness caused by being exposed to high doses of certain types of radiation, usually over a short period of time. Symptoms of acute radiation sickness usually occur right after exposure but they may happen over time, and they may come and go. Symptoms include nausea and vomiting, diarrhea, headache, dizziness, weakness, fatigue, bleeding, hair loss, swelling, itching, and redness of the skin, and other skin problems. Very large doses of radiation may cause death. This is also called acute radiation syndrome, radiation poisoning, radiation sickness, and radiation sickness syndrome.

Adenocarcinoma: Cancer that begins in glandular (secretory) cells. Glandular cells are found in tissue that lines certain internal organs and makes and releases substances in the body, such as mucus, digestive juices, or other fluids. Most cancers of the breast, pancreas, lung, prostate, and colon are adenocarcinomas.

Adenoma: A tumor that is not cancer. It starts in gland-like cells of the epithelial tissue (thin layer of tissue that covers organs, glands, and other structures within the body).

ADH: A benign (not cancer) condition in which there are more cells than normal in the lining of breast ducts and the cells look abnormal under a microscope. Having ADH increases the risk of breast cancer. This is also called atypical ductal breast hyperplasia and atypical ductal hyperplasia.

Adjunctive therapy: Another treatment used together with the primary treatment. Its purpose is to assist the primary treatment, also called adjunct agent or therapy.

Adrenal cancer: Cancer that forms in the tissues of the adrenal glands (two glands located just above the kidneys). The adrenal glands make hormones that control heart rate, blood pressure, and other important body functions. Adrenal cancer that starts in the outside layer of the adrenal gland is called adrenocortical carcinoma. Adrenal cancer that starts in the center of the adrenal gland is called malignant pheochromocytoma.

Advance directive: A legal document that states the treatment or care a person wishes to receive or not receive if he or she becomes unable to make medical decisions (for example, due to being unconscious or in a coma). Some types of advance directives are living wills and do-not-resuscitate (DNR) orders.

Allogeneic stem cell transplantation: A procedure in which a person receives blood-forming stem cells (cells from which all blood cells develop) from a genetically similar, but not identical, donor. This is often a sister or brother, but could be an unrelated donor.

Alternative medicine: Treatments that are used instead of standard treatments. Standard treatments are based on the results of scientific research and are currently accepted and widely used. Less research has been done for most types of alternative medicine. Alternative medicine may include special diets, megadose vitamins, herbal preparations, special teas, and magnet therapy. For example, a special diet may be used instead of anticancer drugs as a treatment for cancer.

Anal cancer: Cancer that forms in tissues of the anus. The anus is the opening of the rectum (last part of the large intestine) to the outside of the body.

Anaplastic: A term used to describe cancer cells that divide rapidly and have little or no resemblance to normal cells.

Angiogenesis inhibitor: A drug or substance that keeps new blood vessels from forming. In cancer treatment, angiogenesis inhibitors may prevent the growth of new blood vessels that tumors need to grow, also called antiangiogenesis agent.

Animal-assisted therapy: A type of therapy that uses dogs or other pets to improve the physical and mental health of patients with certain acute or chronic diseases. It is being studied as a way to relieve distress in cancer patients undergoing treatment for pain, also called pet-facilitated therapy.

Avastin: A drug used to treat glioblastoma (a type of brain cancer) and certain types of colorectal cancer, lung cancer, and kidney cancer. It is also being studied in the treatment of other types of cancer. Avastin binds to a protein called vascular endothelial growth factor (VEGF). This may prevent the growth of new blood vessels that tumors need to grow. It is a type of anti-angiogenesis agent and a type of monoclonal antibody, also called bevacizumab.

B

B cell: A type of white blood cell that makes antibodies. B cells are part of the immune system and develop from stem cells in the bone marrow, also called B lymphocyte.

Barium swallow: The process of getting x-ray pictures of the esophagus or the upper gastrointestinal (GI) tract (esophagus, stomach, and duodenum). The x-ray pictures are taken after the patient drinks a liquid that contains barium sulfate (a form of the silver-white metallic element barium). The barium sulfate coats and outlines the inner walls of the esophagus and the upper GI tract so that they can be seen on the x-ray pictures.

Basal cell cancer: Cancer that begins in the lower part of the epidermis (the outer layer of the skin). It may appear as a small white or flesh-colored bump that grows slowly and may bleed. Basal cell cancers are usually found on areas of the body exposed to the sun. Basal cell cancers rarely metastasize (spread) to other parts of the body. They are the most common form of skin cancer, also called basal cell carcinoma.

Benign tumor: A growth that is not cancer. It does not invade nearby tissue or spread to other parts of the body.

Bilateral cancer: Cancer that occurs in both of a pair of organs, such as both breasts, ovaries, eyes, lungs, kidneys, or adrenal glands, at the same time.

Bile: A fluid made by the liver and stored in the gallbladder. Bile is excreted into the small intestine, where it helps digest fat. The bile duct is the tube through which bile passes in and out of the liver.

Bladder cancer: Cancer that forms in tissues of the bladder (the organ that stores urine). Most bladder cancers are transitional cell carcinomas (cancer that begins in cells that normally make up the inner lining of the bladder). Other types include squamous cell carcinoma (cancer that begins in thin, flat cells) and adenocarcinoma (cancer that begins in cells that make and release mucus and other fluids). The cells that form squamous cell carcinoma and adenocarcinoma develop in the inner lining of the bladder as a result of chronic irritation and inflammation.

Blood cancer: Cancer that begins in blood-forming tissue, such as the bone marrow, or in the cells of the immune system. Examples of blood cancer are leukemia, lymphoma, and multiple myeloma, also called hematologic cancer.

BNCT: A type of radiation therapy. A substance that contains boron is injected into a blood vessel. The boron collects in tumor cells. The patient then receives radiation therapy with atomic particles called neutrons. The neutrons react with the boron to kill the tumor cells without harming normal cells. BNCT is being studied as a treatment for glioblastoma multiforme and recurrent head and neck cancer, also called boron neutron capture therapy.

Bone cancer: Primary bone cancer is cancer that forms in cells of the bone. Some types of primary bone cancer are osteosarcoma, Ewing sarcoma, malignant fibrous histiocytoma, and chondrosarcoma. Secondary bone cancer is cancer that spreads to the bone from another part of the body (such as the prostate, breast, or lung).

Bone density: A measure of the amount of minerals (mostly calcium and phosphorous) contained in a certain volume of bone. Bone density measurements are used to diagnose osteoporosis (a condition marked by decreased bone mass), to see how well osteoporosis treatments are working, and to predict how likely the bones are to break. Low bone density can occur in patients treated for cancer. Also called BMD, bone mass, and bone mineral density.

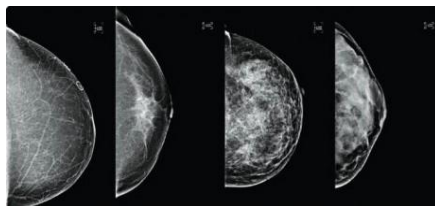
Bone marrow: The soft, sponge-like tissue in the center of most bones. It produces white blood cells, red blood cells, and platelets.

Bone marrow transplant: A procedure to replace bone marrow that has been destroyed by treatment with high doses of anticancer drugs or radiation. Transplantation may be autologous (an individual's own marrow saved before treatment), allogeneic (marrow donated by someone else), or syngeneic (marrow donated by an identical twin).

Brain tumor: The growth of abnormal cells in the tissues of the brain. Brain tumors can be benign (not cancer) or malignant (cancer).

Breast cancer: Cancer that forms in tissues of the breast. The most common type of breast cancer is ductal carcinoma, which begins in the lining of the milk ducts (thin tubes that carry milk from the lobules of the breast to the nipple). Another type of breast cancer is lobular carcinoma, which begins in the lobules (milk glands) of the breast. Invasive breast cancer is breast cancer that has spread from where it began in the breast ducts or lobules to surrounding normal tissue. Breast cancer occurs in both men and women, although male breast cancer is rare.

Breast density: Describes the relative amount of different tissues present in the breast. A dense breast has less fat than glandular and connective tissue. Mammogram films of breasts with higher density are harder to read and interpret than those of less dense breasts.



C

Cancer: A term for diseases in which abnormal cells divide without control and can invade nearby tissues. Cancer cells can also spread to other parts of the body through the blood and lymph systems. There are several main types of cancer. Carcinoma is a cancer that begins in the skin or in tissues that line or cover internal organs. Sarcoma is a cancer that begins in bone, cartilage, fat, muscle, blood vessels, or other connective or supportive tissue. Leukemia is a cancer that starts in blood-forming tissue, such as the bone marrow, and causes large numbers of abnormal blood cells to be produced and enter the blood. Lymphoma and multiple myeloma are cancers that begin in the cells of the immune system. Central nervous system cancers are cancers that begin in the tissues of the brain and spinal cord, also called malignancy.

Cancer cluster: The occurrence of a larger-than-expected number of cases of cancer within a group of people in a geographic area over a period of time.

Cancer vaccine: A type of vaccine that is usually made from a patient's own tumor cells or from substances taken from tumor cells. A cancer vaccine may help the immune system kill cancer cells, also called cancer treatment vaccine.

Carcinogen: Any substance that causes cancer.

Carcinoma: Cancer that begins in the skin or in tissues that line or cover internal organs.

Carcinoma in situ: A group of abnormal cells that remain in the place where they first formed. They have not spread. These abnormal cells may become cancer and spread into nearby normal tissue, also called stage 0 disease.

CAT scan: A series of detailed pictures of areas inside the body taken from different angles. The pictures are created by a computer linked to an x-ray machine, also called computed tomography scan, computerized axial tomography scan, computerized tomography, and CT scan.

Cervical cancer: Cancer that forms in tissues of the cervix (the organ connecting the uterus and vagina). It is usually a slow-growing cancer that may not have symptoms but can be found with regular Pap tests (a procedure in which cells are scraped from the cervix and looked at under a microscope). Cervical cancer is almost always caused by human papillomavirus (HPV) infection.

Charged-particle radiation therapy: A type of external radiation therapy that uses a special machine to make invisible, high-energy particles (protons or helium ions) that kill cancer cells. This type of radiation may cause less damage to nearby healthy tissue than radiation therapy with high-energy x-rays.

Chemotherapy: Treatment with drugs that kill cancer cells.

Childhood cancer: A term used to describe cancers that occur between birth and 15 years of age. Childhood cancers are very rare and may differ from adult cancers in the way they grow and spread, how they are treated, and how they respond to treatment. Common types of childhood cancer include leukemia (begins in blood-forming tissue such as bone marrow), lymphoma (begins in the cells of the immune system), neuroblastoma (begins in certain nerve cells), retinoblastoma (begins in the tissues of the retina), Wilms tumor (a type of kidney cancer), and cancers of the brain, bone, and soft tissue.

Classical Hodgkin lymphoma: The most common type of Hodgkin lymphoma, which is a cancer of the immune system. Classical Hodgkin lymphoma is marked by the presence of a type of cell called the Reed-Sternberg cell.

Colon cancer: Cancer that forms in the tissues of the colon (the longest part of the large intestine). Most colon cancers are adenocarcinomas (cancers that begin in cells that make and release mucus and other fluids).

Colonoscopy: Examination of the inside of the colon using a colonoscope, inserted into the rectum. A colonoscope is a thin, tube-like instrument with a light and a lens for viewing. It may also have a tool to remove tissue to be checked under a microscope for signs of disease.

Colorectal cancer: Cancer that develops in the colon (the longest part of the large intestine) and/or the rectum (the last several inches of the large intestine before the anus).

Core biopsy: The removal of a tissue sample with a wide needle for examination under a microscope, also called core needle biopsy.

D

De novo: In cancer, the first occurrence of cancer in the body.

Diagnostic mammogram: X-ray of the breasts used to check for breast cancer after a lump or other sign or symptom of breast cancer has been found.

Distant metastasis: Refers to cancer that has spread from the original (primary) tumor to distant organs or distant lymph nodes, also known as distant cancer.

E

Early-stage cancer: A term used to describe cancer that is early in its growth, and may not have spread to other parts of the body. What is called early stage may differ between cancer types.

Endocrine cancer: Cancer that occurs in endocrine tissue, the tissue in the body that secretes hormones.

Endometrial cancer: Cancer that forms in the tissue lining the uterus (the small, hollow, pear-shaped organ in a woman's pelvis in which a fetus develops). Most endometrial cancers are adenocarcinomas (cancers that begin in cells that make and release mucus and other fluids).

Esophageal cancer: Cancer that forms in tissues lining the esophagus (the muscular tube through which food passes from the throat to the stomach). Two types of esophageal cancer are squamous cell carcinoma (cancer that begins in flat cells lining the esophagus) and adenocarcinoma (cancer that begins in cells that make and release mucus and other fluids).

Experimental drug: A substance that has been tested in a laboratory and has gotten approval from the U.S. Food and Drug Administration (FDA) to be tested in people in a clinical trial. An experimental drug may be approved by the FDA for use in one disease or condition but be considered investigational in other diseases or conditions, also called investigational agent and investigational drug.

External radiation therapy: A type of radiation therapy that uses a machine to aim high-energy rays at the cancer from outside of the body, also called external-beam radiation therapy.

F

Fallopian tube cancer: Tubal cancer, develops in the fallopian tubes that connect the ovaries and the uterus

Familial cancer: Cancer that occurs in families more often than would be expected by chance. These cancers often occur at an early age, and may indicate the presence of a gene mutation that increases the risk of cancer. They may also be a sign of shared environmental or lifestyle factors.

Family history: A record of the relationships among family members along with their medical histories. This includes current and past illnesses. A family history may show a pattern of certain diseases in a family, also called family medical history.

Fatigue: A condition marked by extreme tiredness and inability to function due lack of energy. Fatigue may be acute or chronic.

G

Gallbladder cancer: Cancer that forms in tissues of the gallbladder. The gallbladder is a pear-shaped organ below the liver that collects and stores bile (a fluid made by the liver to digest fat). Gallbladder cancer begins in the innermost layer of tissue and spreads through the outer layers as it grows.

Gastric cancer: Cancer that forms in tissues lining the stomach, also called stomach cancer.

H

Halsted radical mastectomy: Surgery for breast cancer in which the breast, chest muscles, and all of the lymph nodes under the arm are removed. For many years, this was the breast cancer operation used most often, but it is used rarely now. Doctors consider radical mastectomy only when the tumor has spread to the chest muscles, also called radical mastectomy.

Head and neck cancer: Cancer that arises in the head or neck region (in the nasal cavity, sinuses, lips, mouth, salivary glands, throat, or larynx [voice box]).

Healing touch: A form of complementary and alternative medicine based on the belief that vital energy flows through the human body. This energy is said to be balanced or made stronger by practitioners who pass their hands over, or gently touch, a patient's body. Healing touch is being studied in patients receiving cancer therapy, to find out if it can improve quality of life, boost the immune system, or reduce side effects. Healing touch is a type of energy therapy, also called therapeutic touch.

High-dose chemotherapy: An intensive drug treatment to kill cancer cells, but that also destroys the bone marrow and can cause other severe side effects. High-dose chemotherapy is usually followed by bone marrow or stem cell transplantation to rebuild the bone marrow.

Hodgkin lymphoma: A cancer of the immune system that is marked by the presence of a type of cell called the Reed-Sternberg cell. The two major types of Hodgkin lymphoma are classical Hodgkin lymphoma and nodular lymphocyte-predominant Hodgkin lymphoma. Symptoms include the painless enlargement of lymph nodes, spleen, or other immune tissue. Other symptoms include fever, weight loss, fatigue, or night sweats, also called Hodgkin disease.

Hormonal therapy: Treatment that adds, blocks, or removes hormones. For certain conditions (such as diabetes or menopause), hormones are given to adjust low hormone levels. To slow or stop the growth of certain cancers (such as prostate and breast cancer), synthetic hormones or other drugs may be given to block the body's natural hormones. Sometimes surgery is needed to remove the gland that makes a certain hormone, also called endocrine therapy, hormone therapy, and hormone treatment.

HPV vaccine: A vaccine used to prevent genital warts, anal cancer, cervical cancer, vulvar cancer, and vaginal cancer caused by certain types of human papillomavirus (HPV). It is also used to prevent lesions that are caused by those viruses and that can lead to anal, cervical, vulvar, or vaginal cancer, also called human papillomavirus vaccine.

I

Invasive breast cancer: Cancer that has spread from where it began in the breast to surrounding normal tissue. The most common type of invasive breast cancer is invasive ductal carcinoma, which begins in the lining of the milk ducts (thin tubes that carry milk from the lobules of the breast to the nipple). Another type is invasive lobular carcinoma, which begins in the lobules (milk glands) of the breast. Invasive breast cancer can spread through the blood and lymph systems to other parts of the body, also called infiltrating breast cancer.

K

Kidney cancer: Cancer that forms in tissues of the kidneys. Kidney cancer includes renal cell carcinoma (cancer that forms in the lining of very small tubes in the kidney that filter the blood and remove waste products) and renal pelvis carcinoma (cancer that forms in the center of the kidney where urine collects). It also includes Wilms tumor, which is a type of kidney cancer that usually develops in children under the age of 5.

L

Laryngeal cancer: Cancer that forms in tissues of the larynx (area of the throat that contains the vocal cords and is used for breathing, swallowing, and talking). Most laryngeal cancers are squamous cell carcinomas (cancer that begins in flat cells lining the larynx).

Liver cancer: Primary liver cancer is cancer that forms in the tissues of the liver. Secondary liver cancer is cancer that spreads to the liver from another part of the body.

Lung cancer: Cancer that forms in tissues of the lung, usually in the cells lining air passages. The two main types are small cell lung cancer and non-small cell lung cancer. These types are diagnosed based on how the cells look under a microscope.

M

Male breast cancer: Cancer that forms in tissues of the breast in men. Most male breast cancer begins in cells lining the ducts. It is very rare and usually affects older men.

Malignancy: A term for diseases in which abnormal cells divide without control and can invade nearby tissues. Malignant cells can also spread to other parts of the body through the blood and lymph systems. There are several main types of malignancy. Carcinoma is a malignancy that begins in the skin or in tissues that line or cover internal organs. Sarcoma is a malignancy that begins in bone, cartilage, fat, muscle, blood vessels, or other connective or supportive tissue. Leukemia is a malignancy that starts in blood-forming tissue, such as the bone marrow, and causes large numbers of abnormal blood cells to be produced and enter the blood. Lymphoma and multiple myeloma are malignancies that begin in the cells of the immune system. Central nervous system cancers are malignancies that begin in the tissues of the brain and spinal cord, also called cancer.

Margin: The edge or border of the tissue removed in cancer surgery. The margin is described as negative or clean when the pathologist finds no cancer cells at the edge of the tissue, suggesting that all of the cancer has been removed. The margin is described as positive or involved when the pathologist finds cancer cells at the edge of the tissue, suggesting that all of the cancer has not been removed.

Melanoma: A form of cancer that begins in melanocytes (cells that make the pigment melanin). It may begin in a mole (skin melanoma), but can also begin in other pigmented tissues, such as in the eye or in the intestines.

Metastasis: The spread of cancer from one part of the body to another. A tumor formed by cells that have spread is called a “metastatic tumor” or a “metastasis.” The metastatic tumor contains cells that are like those in the original (primary) tumor. The plural form of metastasis is metastases (meh-TAS-tuh-SEEZ).

N

Non-Hodgkin lymphoma: Any of a large group of cancers of lymphocytes (white blood cells). Non-Hodgkin lymphomas can occur at any age and are often marked by lymph nodes that are larger than normal, fever, and weight loss. There are many different types of non-Hodgkin lymphoma. These types can be divided into aggressive (fast-growing) and indolent (slow-growing) types, and they can be formed from either B-cells or T-cells. B-cell non-Hodgkin lymphomas include Burkitt lymphoma, chronic lymphocytic leukemia/small lymphocytic lymphoma (CLL/SLL), diffuse large B-cell lymphoma, follicular lymphoma, immunoblastic large cell lymphoma, precursor B-lymphoblastic lymphoma, and mantle cell lymphoma. T-cell non-Hodgkin lymphomas include mycosis fungoides, anaplastic large cell lymphoma, and precursor T-lymphoblastic lymphoma. Lymphomas that occur after bone marrow or stem cell transplantation are usually B-cell non-Hodgkin lymphomas. Prognosis and treatment depend on the stage and type of disease, also called NHL.

O

Oncology: A branch of medicine that specializes in the diagnosis and treatment of cancer. It includes medical oncology (the use of chemotherapy, hormone therapy, and other drugs to treat cancer), radiation oncology (the use of radiation therapy to treat cancer), and surgical oncology (the use of surgery and other procedures to treat cancer).

Oral cancer: Cancer that forms in tissues of the oral cavity (the mouth) or the oropharynx (the part of the throat at the back of the mouth).

Ovarian cancer: Cancer that forms in tissues of the ovary (one of a pair of female reproductive glands in which the ova, or eggs, are formed). Most ovarian cancers are either ovarian epithelial carcinomas (cancer that begins in the cells on the surface of the ovary) or malignant germ cell tumors (cancer that begins in egg cells).

P

Palliative care: Care given to improve the quality of life of patients who have a serious or life-threatening disease. The goal of palliative care is to prevent or treat as early as possible the symptoms of a disease, side effects caused by treatment of a disease, and psychological, social, and spiritual problems related to a disease or its treatment, also called comfort care, supportive care, and symptom management.

Pancreatic cancer: A disease in which malignant (cancer) cells are found in the tissues of the pancreas, also called exocrine cancer.

Pathologist: A doctor who identifies diseases by studying cells and tissues under a microscope.

Prostate cancer: Cancer that forms in tissues of the prostate (a gland in the male reproductive system found below the bladder and in front of the rectum). Prostate cancer usually occurs in older men.

R

Radiation therapy: The use of high-energy radiation from x-rays, gamma rays, neutrons, protons, and other sources to kill cancer cells and shrink tumors. Radiation may come from a machine outside the body (external-beam radiation therapy), or it may come from radioactive material placed in the body near cancer cells (internal radiation therapy). Systemic radiation therapy uses a radioactive substance, such as a radiolabeled monoclonal antibody, that travels in the blood to tissues throughout the body, also called irradiation and radiotherapy.

Radiologist: A doctor who specializes in creating and interpreting pictures of areas inside the body to find signs of cancer. The pictures are produced with x-rays, sound waves, or other types of energy.

Rectal cancer: Cancer that forms in the tissues of the rectum (the last several inches of the large intestine closest to the anus).

Recurrent cancer: Cancer that has recurred (come back), usually after a period of time during which the cancer could not be detected. The cancer may come back to the same place as the original (primary) tumor or to another place in the body. This is also called a reoccurrence.

S

Skin cancer: Cancer that forms in the tissues of the skin. There are several types of skin cancer. Skin cancer that forms in melanocytes (skin cells that make pigment) is called melanoma. Skin cancer that forms in the lower part of the epidermis (the outer layer of the skin) is called basal cell carcinoma. Skin cancer that forms in squamous cells (flat cells that form the surface of the skin) is called squamous cell carcinoma. Skin cancer that forms in neuroendocrine cells (cells that release hormones in response to signals from the nervous system) is called neuroendocrine carcinoma of the skin. Most skin cancers form in older people on parts of the body exposed to the sun or in people who have weakened immune systems.

T

Testicular cancer: Cancer that forms in tissues of one or both testicles. Testicular cancer is most common in young or middle-aged men. Most testicular cancers begin in germ cells (cells that make sperm) and are called testicular germ cell tumors.

Thyroid cancer: Cancer that forms in the thyroid gland (an organ at the base of the throat that makes hormones that help control heart rate, blood pressure, body temperature, and weight). Four main types of thyroid cancer are papillary, follicular, medullary, and anaplastic thyroid cancer. The four types are based on how the cancer cells look under a microscope.

U

Uterine cancer: Cancer that forms in tissues of the uterus (the small, hollow, pear-shaped organ in a woman's pelvis in which a fetus develops). Two types of uterine cancer are endometrial cancer (cancer that begins in cells lining the uterus) and uterine sarcoma (a rare cancer that begins in muscle or other tissues in the uterus).

V

Vaginal cancer: Cancer that forms in the tissues of the vagina (birth canal). The vagina leads from the cervix (the opening of the uterus) to the outside of the body. The most common type of vaginal cancer is squamous cell carcinoma, which starts in the thin, flat cells lining the vagina. Another type of vaginal cancer is adenocarcinoma, cancer that begins in glandular cells in the lining of the vagina.

